



Keeping Families Together, Stable and Safe: Transformation in Oregon Child Welfare

Aprille Flint-Gerner, MSW & Akhila K. Nekkanti, PhD

October 21, 2024

We believe that everyone in Oregon deserves **opportunities to thrive and reach their full potential.**

Maximizing people's potential helps our communities thrive and benefits our entire state.

Self Sufficiency's Vision into Action



Child Welfare's Vision for Transformation

We believe **children do best growing up in their family and community** and on values related to honoring and supporting cultural wisdom, building community resilience and voice, and ensuring the self-determination of our communities of color.





What trends are we seeing across the state?

Child Welfare

- ↑ Increasing number of children being served in-home without experiencing foster care
- ↓ Decreasing number of children entering foster care
- ↑ Increasing external collaborations focusing on prevention

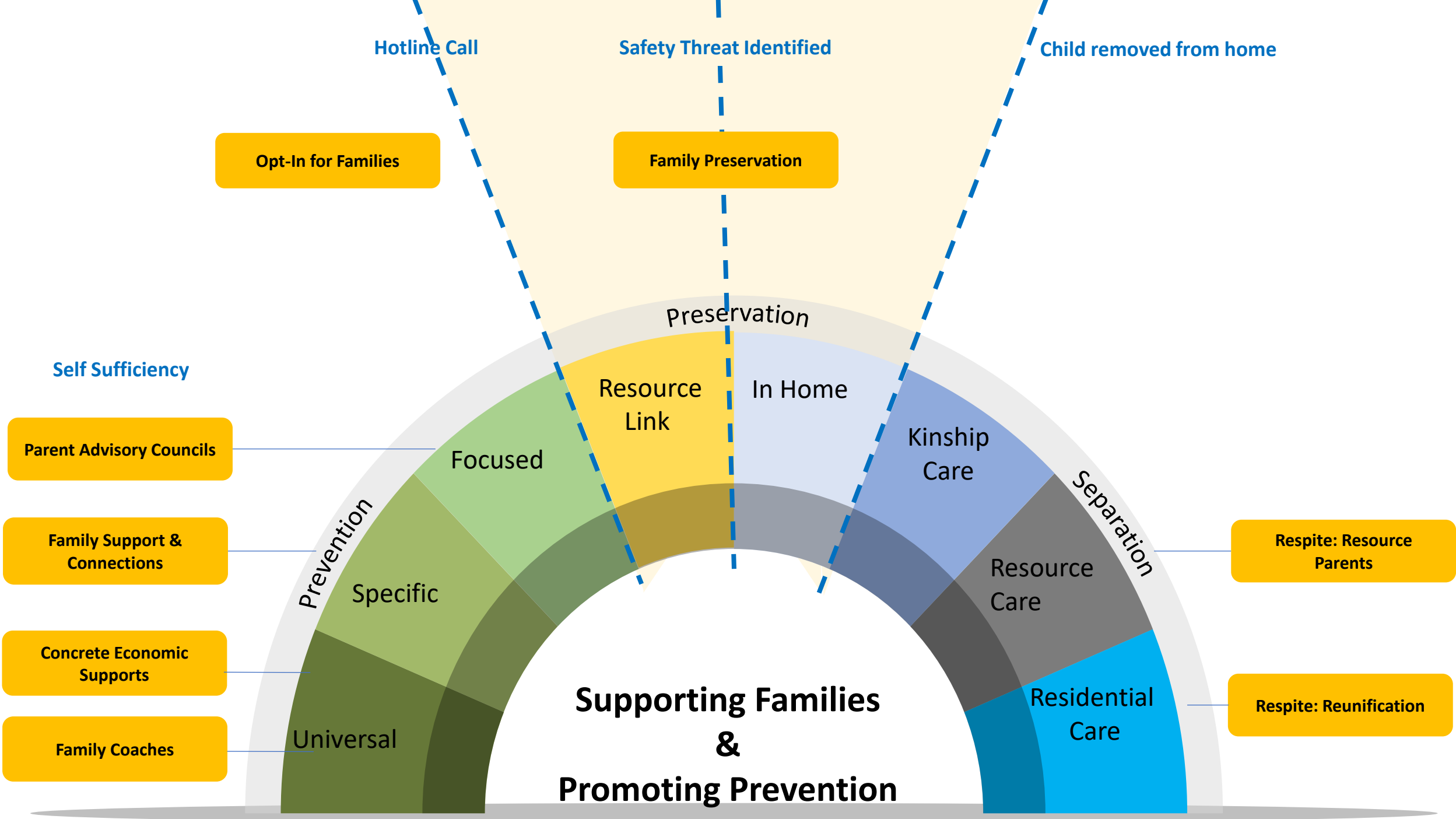
Self-Sufficiency

- ↑ Prioritizing promotion of family well-being
- ↓ End of full family sanctions
- ↑ Increase in TANF eligible families
- ↑ Increase in ERDC eligible families
- ↑ Increase in SNAP/EBT usage



Self Sufficiency & Child Welfare:

Prioritizing preservation & cross program collaboration to promote well-being.



The Family Preservation approach actualizes the Vision for Transformation and Vision in Action by **supporting...**

Systems in shifting to prioritize keeping families together and in their communities.



Families and communities tell us what they need, when they need it, how they need it and who they need it from, **and we deliver.**

FAMILY PRESERVATION DEMONSTRATION SITES

COHORT 2

COHORT 1

Gresham

Washington County

Polk

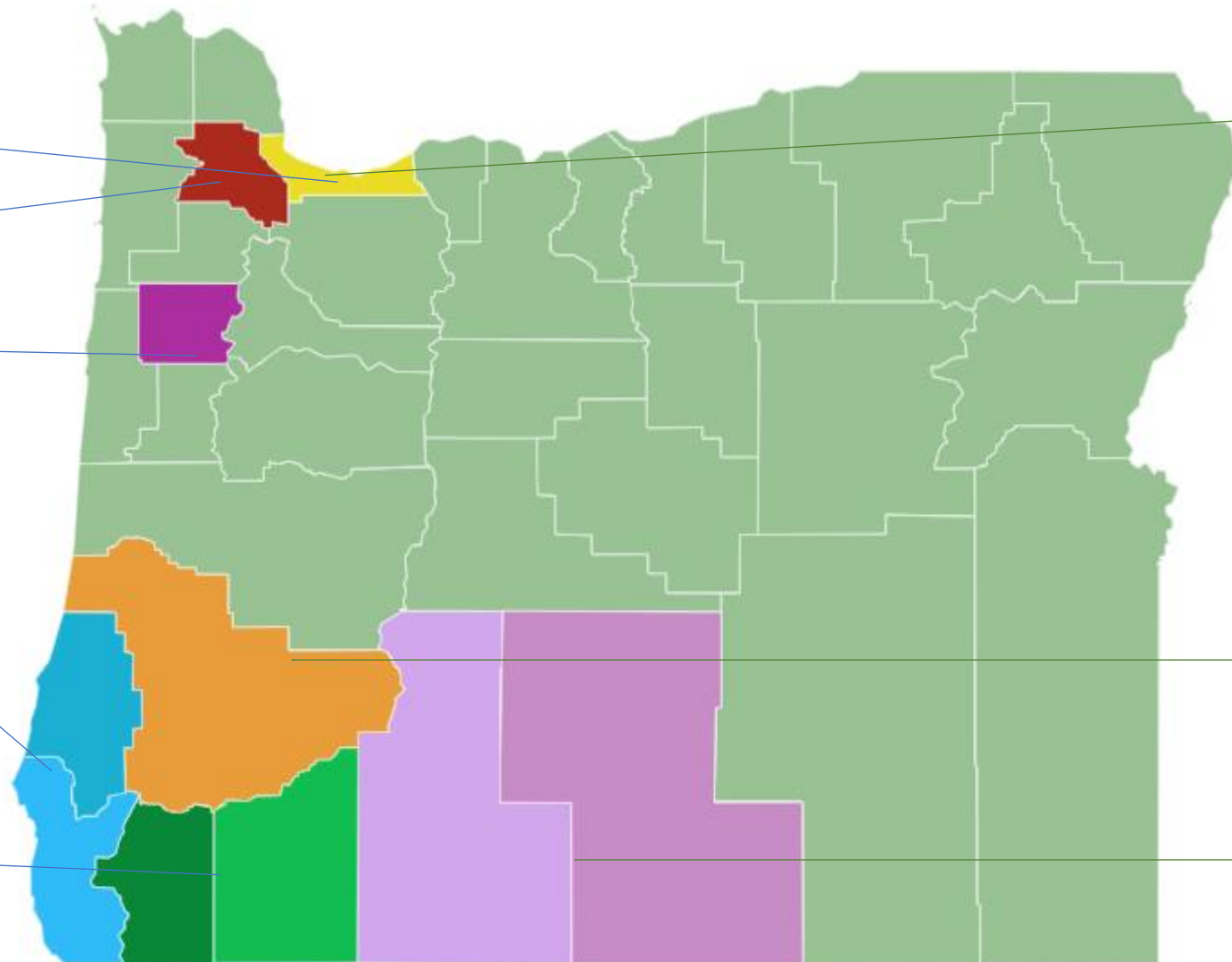
Coos & Curry Counties

Jackson & Josephine Counties

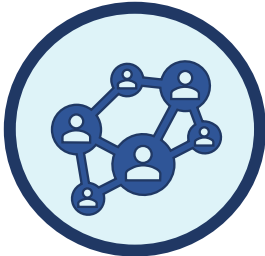
Alberta

Douglas

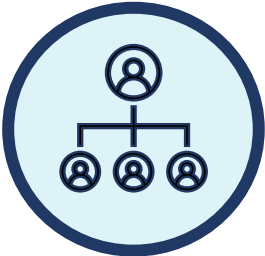
Klamath



What elements are foundational for Family Preservation?



**SUPPORTS &
SERVICES**



**INTRA-AGENCY
RELATIONSHIPS**



**COMMUNITY
ENGAGEMENT**



PRACTICE

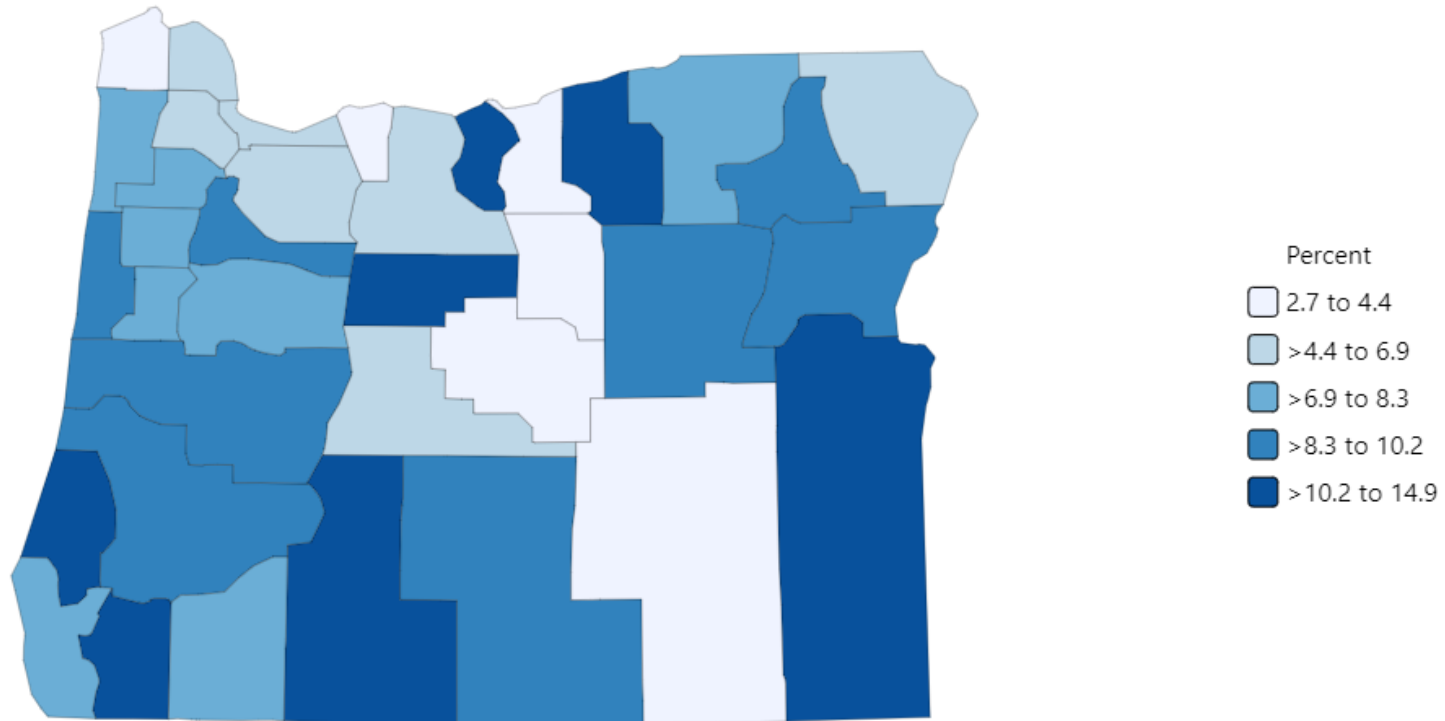
DATA & EQUITY



SUPPORTS & SERVICES

The 2nd most called in threat to the Oregon Child Abuse Hotline is Neglect, which we know has a strong poverty overlay).

75, 694 families were living below the federal poverty level in 2022.



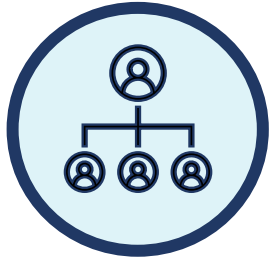


SUPPORTS & SERVICES



In Multnomah County since 2021...

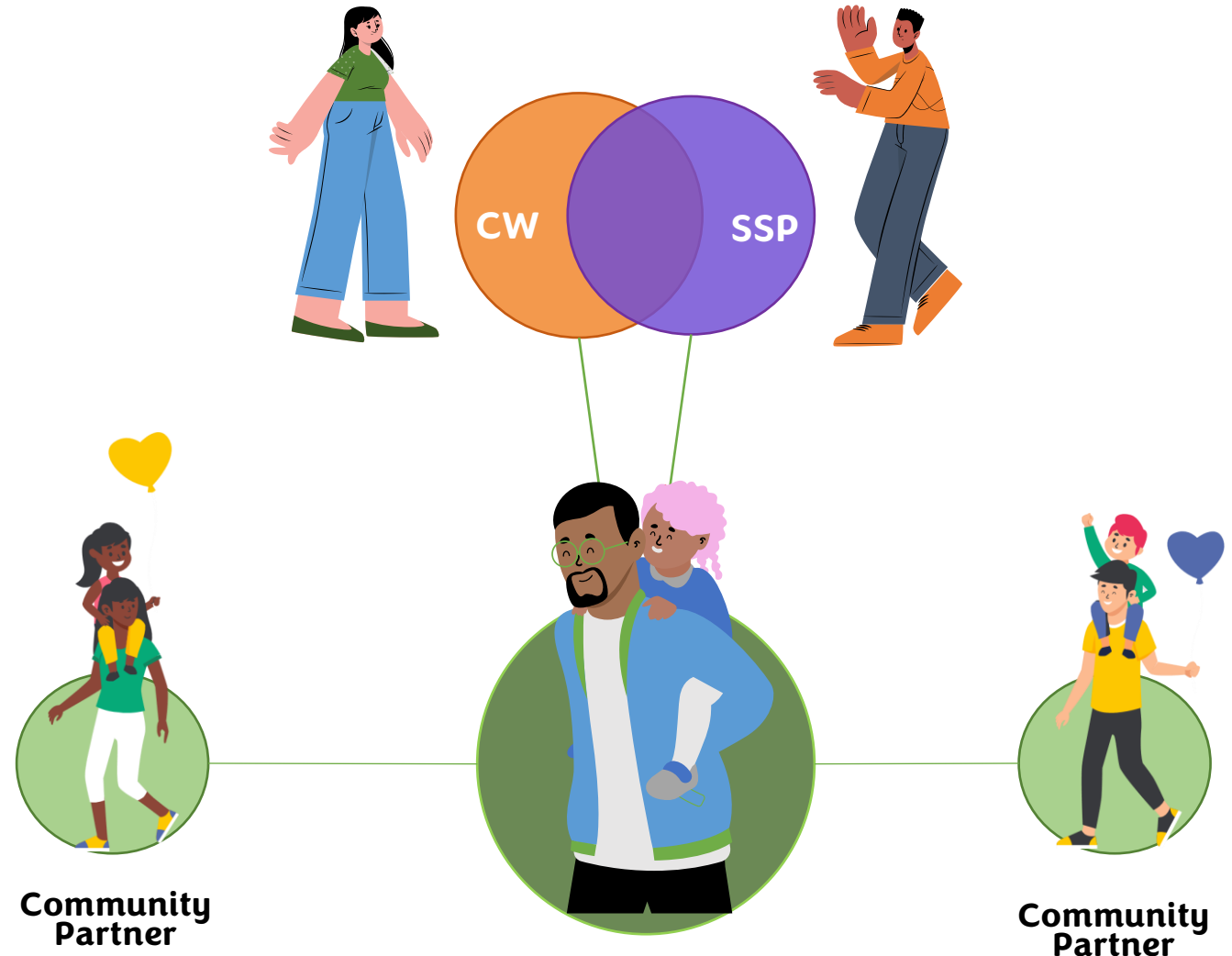
- 29%** ↑ families eligible for TANF
- 63%** ↑ EBT requests for issuance/reissuance
- 53%** ↑ families eligible for ERDC
- 46%** ↑ families impacted by Domestic Violence (TA-DVS)

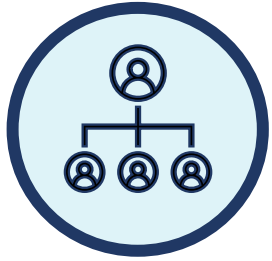


INTRA-AGENCY RELATIONSHIPS

When we practice Family Preservation, the caseworker connects with a Family Coach in the Self Sufficiency Program.

Together, they work to understand family dynamics and plan a trauma-informed, intentional approach for the family that supports them staying together, stable, and safe.





INTRA-AGENCY RELATIONSHIPS



In Coos & Curry Counties...

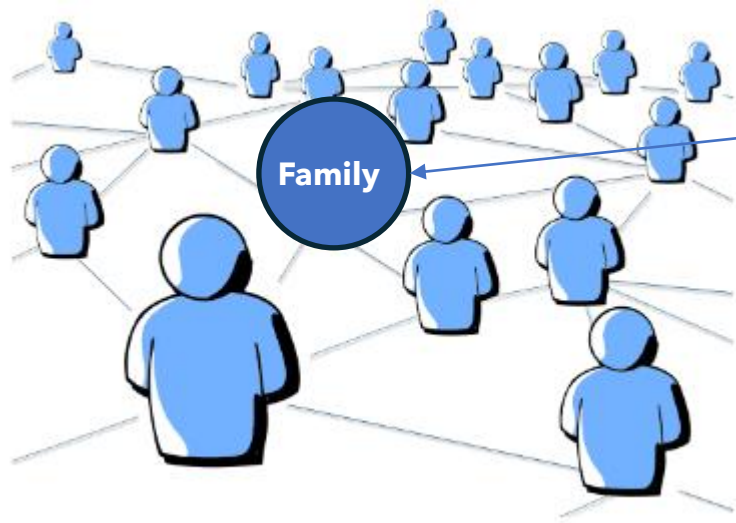


Partnerships across programs help provide multi-generational support



PRACTICE

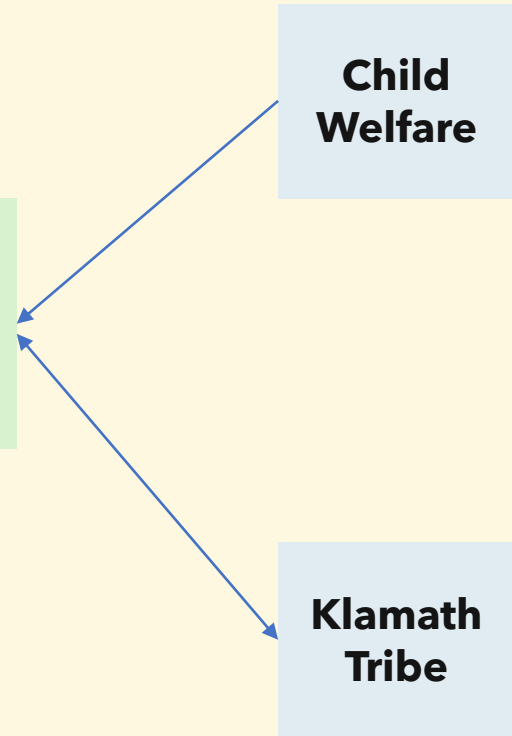
In Klamath County, Self-Sufficiency family coaches work in close partnership with the Klamath Tribe, in addition to working with Child Welfare. **Native children are overrepresented by only 1% in Foster Care in Klamath County.**



**Self-Sufficiency
Program - Family
Coaches**
(connector)

**Child
Welfare**

**Klamath
Tribe**





COMMUNITY ENGAGEMENT

- **Early Childhood**

- Preschool 4 All (Multnomah County)

- **Concrete Economic Supports**

- Southern Oregon Success – Jackson & Josephine Counties

- **Parenting**

- Oregon Tech, Relationship-Based Parenting (Klamath County)

- **Education & Youth Support**

- Elevate Oregon (Multnomah County)
- Punx with a Purpose (Polk County)

- **Mental Health and Family Well-Being**

- Sankofa Counseling our BIPOC/Trans/Nonbinary and LGBTQAI/ (Multnomah)
- Relief Nursery (multiple counties)

- **Behavioral Health**

- Klamath Basin Behavioral Health (Klamath County)

- **Peer Support**

- Transformation Wellness (Klamath County)
- Morrison Peer Mentors (multiple counties)



COMMUNITY ENGAGEMENT

Stance towards community	0 IGNORE	1 INFORM	2 CONSULT	3 INVOLVE	4 COLLABORATE	5 DEFER TO
Impact	<i>Marginalization</i>	<i>Placation</i>	<i>Tokenization</i>	<i>Voice</i>	<i>Delegated Power</i>	<i>Community Ownership</i>
Community Engagement Goals	Deny access to decision-making processes	Provide the community with relevant information	Gather input from the community	Ensure community needs and assets are integrated into process and inform planning	Ensure community capacity to play a leadership role in implementation of decisions	Foster democratic participation and equity by placing full decision-making in the hands of the community; bridge divide between community and governance
Message to Community	<i>"Your voice, needs, and interests do not matter"</i>	<i>"We will keep you informed"</i>	<i>"We care what you think"</i>	<i>"You are making us think (and therefore act) differently about the issue"</i>	<i>"Your leadership and expertise are critical to how we address the issue"</i>	<i>"It's time to unlock collective power and capacity for transformative solutions"</i>



Data: What are we seeing and hearing?



FAMILY PRESERVATION DATA

ALBERTA BRANCH

- 90% of children remain at home after Family Preservation
- On average, 16% of all cases are In-Home
- 62 families, 102 youth/kids served in Family Preservation
- Children in Family Preservation are primarily between 0-4 years old, followed by ages 10-14
- Average length of an open CW case in Family Preservation: 9 months compared to a reunification case: 14 months
- One-time payments: 75% of what is being provided to families

KLAMATH COUNTY

- 89% of children remain at home after Family Preservation
- On average, 12% of all cases are In-Home
- 32 families, 62 youth/kids served in Family Preservation
- Children in Family Preservation are primarily between 0-4 years old, followed by ages 15-18
- Average length of an open CW case in Family Preservation: 6.5 months compared to a reunification case: 14 months
- One-time payments: 87% of what is being provided to families



INSIGHTS ABOUT CONTEXT: ODHS

Insight 1: ODHS staff mindsets do not always align with the Family Preservation approach.

Insight 2: The transactional nature of the ODHS system is in tension with the transformational approach of Family Preservation



What families are saying...